

SEA PORT
MARINA & HOTEL

Marina Room

Specs: 40' x 70' x 16' 2,650 sq. ft.

Max Occupancy Range (depending on room set-up):

Classroom Style: 120 persons

Theater Style: 200 persons

Dinner and Dance: 150 persons

Crest Room - Executive Room - Regal Room

Specs: 20' x 43' x 16' 860 sq. ft.

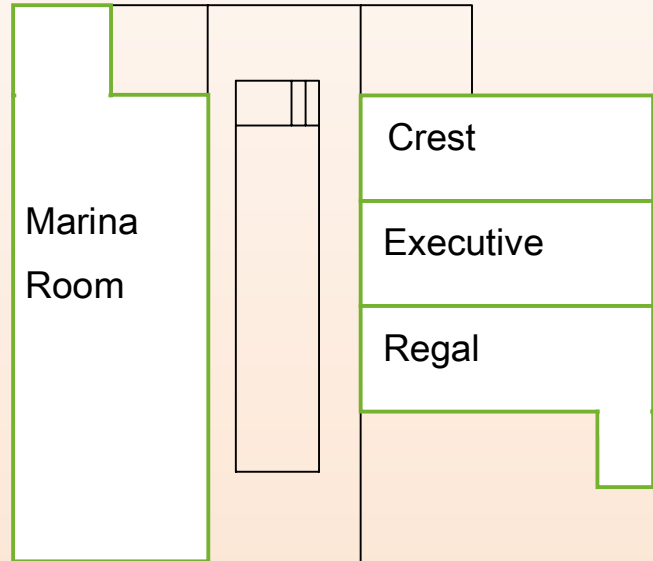
Max Occupancy Range (depending on room set-up):

Classroom Style: 40 persons

Theater Style: 50 persons

Conference Style: 30 persons

Marina
View



Coast Room

Specs: 20' x 40' x 10' 800 sq. ft.

Max Occupancy Range (depending on room set-up):

Classroom Style: 35 persons

Theater Style: 70 persons

Banquet Style: 50 persons

Presidents Room

Specs: 20' x 24' x 10' 480 sq. ft.

Max Occupancy Range (depending on room set-up):

Conference Style (only): 14 persons

Courtyard Room

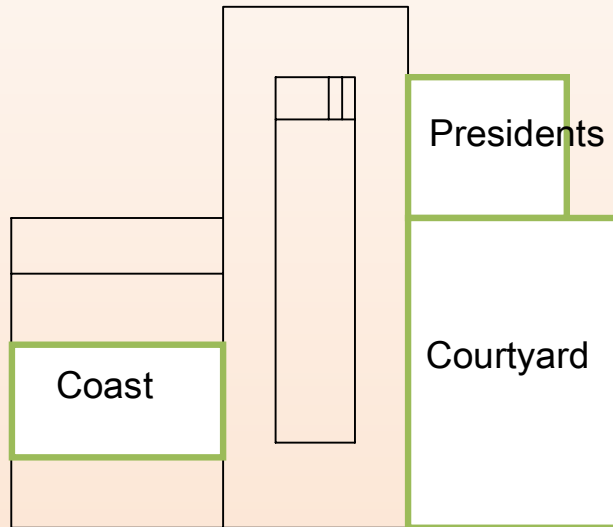
Specs: 40' x 35' x 10' 1,440 sq. ft.

Max Occupancy Range (depending on room set-up):

Classroom Style: 50 persons

Theater Style: 100 persons

Banquet Style: 70 persons



P
C
H
V
I
E
W

Empire Ballroom (may be sectioned to mini ballrooms)

Specs: 52' x 104' x 18' 5,408 sq. ft.

Max Occupancy Range (depending on room set-up):

Classroom Style: 300 persons

Theater Style: 700 persons

Dinner and Dance: 300 persons

Empire North

Specs: 52' x 30' x 18' 1,506 sq. ft.

Max Occupancy Range (depending on room set-up):

Classroom Style: 75 persons

Theater Style: 200 persons

Dinner and Dance: 120 persons

Empire Center

Specs: 52' x 37' x 18' 1,924 sq. ft.

Max Occupancy Range (depending on room set-up):

Classroom Style: 125 persons

Theater Style: 225 persons

Dinner and Dance: 150 persons

Empire South

Specs: 52' x 37' x 18' 1,924 sq. ft.

Max Occupancy Range (depending on room set-up):

Classroom Style: 125 persons

Theater Style: 225 persons

Dinner and Dance: 150 persons

M
a
r
i
n
a
V
i
e
w

